

Uncompromising image quality

CR 30-X

your **compact** table top CR system



Digital solutions from **Celtic SMR Ltd.** 0800 279 9050



uncompromising image quality



With the launch of the CR 30-X Agfa brings the latest CR technology to the veterinary market. This hi-speed automated table top CR system, gives outstanding resolution of 10 pixels/mm with Agfa's patented MUSICA diagnostic software.

The MUSICA software has been developed for Agfa's highest specification CR equipment and has been packaged in this tabletop system with no compromise on image quality, giving unrivalled diagnostic performance at a very affordable price. This technology is presented in a user friendly touch screen format which has been designed for ease of use and to speed work flow. Applications for small animal and equine radiography have been specifically developed for this system.

- **Hi-speed automated CR system**
- **Unrivalled image quality with Agfa's patented MUSICA diagnostic software**
- **User friendly touch screen format**
- **Software specifically developed for small animal and equine applications**
- **DICOM/PACS conformant.**

MUSICA Diagnostic software: Agfa's technologically advanced image processing software MUSICA is part of the standard software package of the CR 30-X. MUSICA composes the digital image in a number of different frequency ranges (or detail sizes) modulating the contrast within each of these ranges, resulting in exceptional perceptibility which visualises every detail, whatever the size or contrast.

Touch screen format: Has been designed to speed work flows for frequently repeated tasks at the touch of the screen. It could not be easier. For precision editing requiring greater accuracy the mouse control can be used.

suited

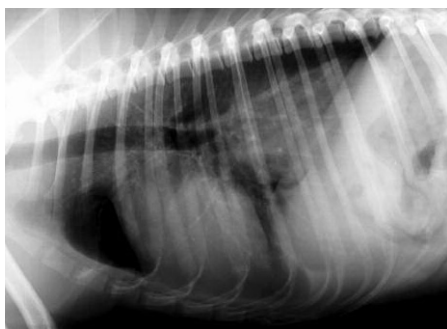
to your needs



Compact design



Touch screen



High resolution



Small animal and equine applications

- Image processing algorithms have been developed specifically for small animal and equine radiography enhancing image quality. The work flow has been designed for veterinarians, tailored for the different views required for small animal and equine radiography.

Table-top design for ease of use and minimal maintenance

- With its table-top size the CR 30-X can be located in a small area within the practice. The CR 30-X works with dedicated cassettes and has been designed with ease of use in mind, for optimum handling, comfort and minimal maintenance.

NX Software: Comprises of NX Optiview and NX Precision Tools.

NX Optiview: Features include:

- The area outside the image is automatically made black or grey even on multiple exposures on a single plate
- Detected repetitive patterns, caused by anti scatter grids are removed
- Square marker is automatically placed in top left of all images, as the image is rotated or flipped the marker also moves indicating a change in orientation
- Preset examination details greatly speed work flow.

NX Precision tools: Features of this software include:

- Addition of annotations to images, markers, predefined text, drawing lines or shapes.
- A zoom facility allows for a greater degree of magnification when required
- Measurements, including distances and angles.

DICOM/PACS Conformant: The CR 30-X is fully DICOM compatible, and designed to work as a stand alone unit, or can be configured to a fully intergrated PACS system.

Cassettes with memory

The CR 30-X uses dedicated cassettes with an embedded memory that stores data entered during identification.

Maintenance: The CR 30-X has been designed for minimal maintenance requirements. Several servicing packages are available to suit your practice requirements.

Warranty: 12 months' warranty on all Agfa equipment.

Specifications

CR 30-X

GENERAL

Digitizer type

- Single cassette feed
- Throughput:
 - 35 x 43 cm (14 x 17") = approx. 70 plates/hour
 - 24 x 30 cm (9.5 x 12") = approx. 84 plates/hour
 - 18 x 24 cm (7 x 9.5") = approx. 94 plates/hour
 - 15 x 30 cm (6 x 12") = approx. 99 plates/hour

LCD display

- Machine status and error conditions

Greyscale resolution

- Data acquisition: 16 bits/pixel
- Output to processor: 12 bits/pixel

Dimensions and weight

- (W x D x H): 693 x 701 x 464 mm (27.2 x 27.6 x 18.2")
Depth including input tray: 769 mm (30.3")
- Weight: approx. 98 kg (216.05 lbs)

Power

- 220 - 240 V/50-60 Hz
Standby 120W, max 250W, 16A fuse
- 120V/60Hz (USA)
Standby 120W, max 250W, 15A fuse
- 100V/60Hz (Japan)
Standby 120W, max 250W, 15A fuse

Minimum requirements

- CR MD 4.0T General Cassette
- CR MD 4.0 General Plate
- NX

Environmental conditions

- Temperature: 15 - 30 °C (59 - 86°F)
- Humidity: 15 - 75% RH
- Magnetic fields: max. 3.8 μ T in conformance with EN 61000-4-8: level 2
- Rate of change of temperature: 0.5°C/minute (0.9°F)

Environmental effects

- Noise level: max. 65 dB (A)
- Heat dissipation: standby 120 W, max. 250 W

SAFETY

Approvals

- UL, cUL, CE

Transport details

- Temperature: -25 to +55°C (-4 to 131°F),
-25°C for max. 72 hours, +55°C for max. 96 hours
- Humidity: 5 - 95% RH

