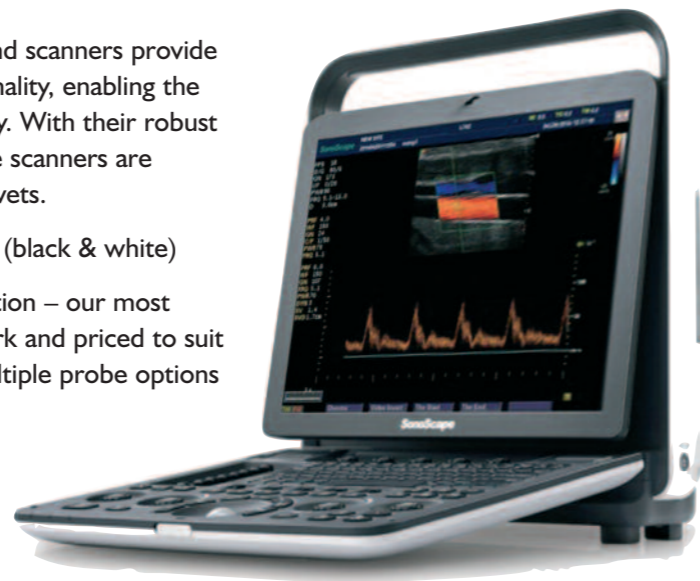


Ultrasonography

Outstanding Performance & Value

The equine range of SonoScape ultrasound scanners provide outstanding image resolution and functionality, enabling the diagnosis of the subtlest tendon pathology. With their robust build quality and light weight design these scanners are exceptional value for ambulatory equine vets.

- SonoScape A6 – fertility, basic scanning (black & white)
- SonoScape S2 – mid range, high resolution – our most popular scanner for general equine work and priced to suit most budgets. Colour Doppler and multiple probe options for specialist procedures
- SonoScape S8Exp – higher resolution and performance than the S2. The S8 comes with high definition tendon, fertility and ophthalmic probes. Low frequency colic probe also available
- SonoScape S9 – referral level for very high definition tendon scanning. Full cardiac functionality including integrated ECG with penetration depth of 40cm suitable for cardiac studies in large horses. Very high definition system with a range of specialist probes to scan at the highest level



Probes

Linear probe

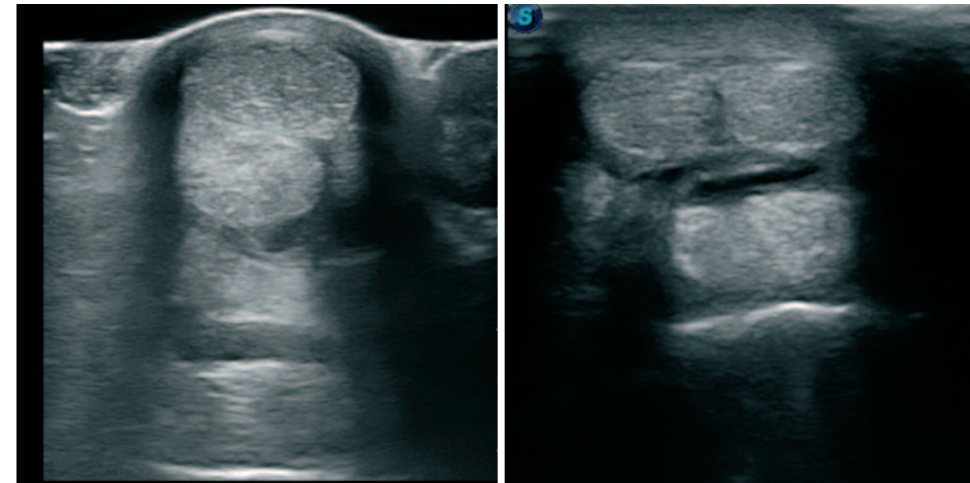
- L742 (4.0-16.0MHz), T shaped linear or rectal - High Resolution tendons, fertility, ophthalmic
- I0L2 (9.1-16.0MHz) Very high resolution imaging - ophthalmic, tendon (referral)

Convex probes

- C353 (2.0-7.0 MHz) - equine abdomen, liver biopsy/colic
- C322 (2.0-7.0 MHz) - equine abdomen

Phased array

- 3PI (1.0-6.0MHz) equine echocardiography



Features

- Excellent range of programmable parameters
- Different probe combinations can be provided and additional probes can be added as required for greater clinical functionality without the need for software upgrades
- Measurements include distance, eclipse and trace
- Multi-beam processing
- Two active probe connectors giving push button change during examination
- Battery: There is an integral battery with approximately 1.5 hours operating life
- DICOM transmission and worklist
- Warranty: 2 year warranty on scanners, 12 month warranty on the probes
- Accessories: A carrying case for transport, Trolley is available as an option, Foot switch
- Just high definition images – *first time, every time*



Technical Specification

S2

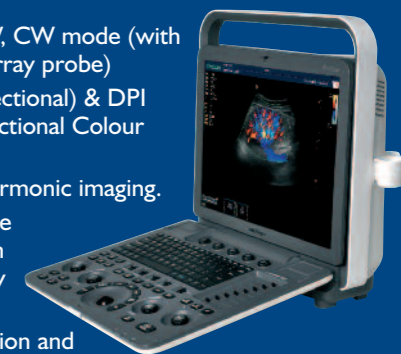
The S2 comes complete with:

- Two active probe connectors giving push button change during examination
- Power Doppler included for vascular assessments
- Advanced image processing software
- Tissue Harmonic Imaging (THI) up to 16MHz
- Cine store of 999 frames (99secs)



S8 Exp

- B, M, PW, CW mode (with phased array probe)
- CDI (directional) & DPI (non directional Colour Doppler)
- Tissue harmonic imaging.
- High pulse repetition frequency
- DICOM transmission and worklist



S9 Pro

- B, M, PW, and CW mode (with phased array probe)
- CDI (directional) DPI (non directional Colour Doppler)
- Tissue harmonic imaging
- High pulse repetition frequency
- DICOM transmission and worklist
- ECG: The unit also comes with integral ECG module
- Equine Cardiology: Deep tissue penetration of 40cm allows equine cardiac examinations in large horses

