

Company Profile

Since its establishment, SonoScape has been committed to providing high quality medical equipment for the healthcare sector. SonoScape specializes in the development and production of diagnostic ultrasound solutions. By introducing advanced imaging techniques, SonoScape has improved diagnostic accuracy and therefore enabled better health outcomes. Since 2002, SonoScape has reached and benefited millions of people. With the world in mind, SonoScape will continue providing more effective and accessible healthcare solutions, through persistent innovation and passion for life.

Quote from the Analyst of

"The Frost & Sullivan Award for Growth Leadership is presented to the company that has demonstrated excellence in capturing the highest annual compound growth rate for the last 3 years...The sales of ultrasound devices contribute an overwhelming proportion of total revenue, helping the company strengthen its leading position to outperform the competitors in the marketplace. With increasing penetration of mid-to high-end ultrasound devices, SonoScape is expected to see significant growth potential in the future... "

Company Milestone

- 2002: Company Founded in Shenzhen, China
- 2003: Released SSI-1000: the 1st 15" Portable Color Doppler system in China
- 2004: Released SSI-2000: the 1st PC platform Color Doppler system in China
- 2005: Received the "High Technology Company" award from the PRC government
- 2007: Received "CHINA TOP BRAND" award in the Medical Equipment Industry
- 2007: Released the 1st Real time 4D ultrasound system in China
- 2008: Received "European Entrepreneurial Company 2008" award from FROST & SULLIVAN
- 2008: Received "Flagship Company" award in the Medical Equipment Industry in China
- 2009: Received "Product Quality Leadership Award 2009" from FROST & SULLIVAN
- 2011: Received the Reddot 2011 Product Design Award for S20 in Essen, Germany
- 2013: Received "Ultrasound Market Growth Leadership Award, 2013" from FROST & SULLIVAN



SonoScape

Yizhe Building, Yuquan Road, Shenzhen, 518051, China
Tel: 86-755-26722890 Fax: 86-755-26722850
E-mail: market@sonoscape.net www.sonoscape.com

SonoScape



S8 EXP

Agile and Versatile



S8EXP

The true nobility is in being superior to any in its class. Consistently improving technologies and services to help deliver better patient cares, SonoScape's passion for innovation makes it a natural fit for today's market and the choice for tomorrow. With the belief in leading the trend of ultrasound, inheriting and spreading classic and elegance, and by continuous efforts, Sonoscape releases a new model S8Exp.

With ultra-modern innovative design and the clinically-proven technologies, S8Exp is well equipped as a low-physical-effort and enhanced-image-quality ultrasound scanner, which not only provides optimized solutions for versatile applications, but does help to improve the user-experience for both routine and non-traditional challenges. Working with S8Exp, it will trigger your unlimited reverie and endow you with endless charm.



Carrying forward the classical design of SonoScape's portable ultrasound products, S8Exp successfully combines the best ergonomics, attractive design and ease of use. This charismatic identity is also enhanced by a sophisticated color palette—with sedate grey as its interior paint color and pearl white as exterior cover, S8Exp reveals a style of aristocrat and strong character among SonoScape's ultrasound systems.

- The rechargeable battery integrated within the system ensures the possibility of performing outdoor ultrasound examination.
- Its greater compactness together and its lightweight enable you to take ultrasound excellence where fast responses are needed.



- The most important controls are well located within an intuitive interface, making all operations both easy and fast.
- Fifty degree foldable high resolution color LCD screen guarantees the most comfortable viewing location available in any environment.



Workflow

The S8Exp adapts to your workflow, whether you are in the consult room, at the bedside, or at a remote location. With easy-to-use new platform designed for sonographers' needs and full connection interfaces for easy connectivity and data sharing, S8Exp leads to an improved user comfort and clinical outcome as well as patient throughput and working efficiency.

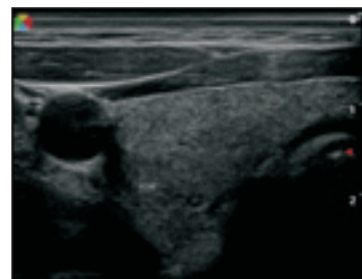
Powerful Platform

Embedded with SonoScape's core imaging technologies such as μ -scan, PHI and Spatial Compound, S8Exp boasts exceptional 2D image, sensitive spectral, Color and Power Doppler, displaying well-defined anatomy and pathology and facilitating a highly optimized diagnostic user environment for conclusive diagnoses.

Besides, S8Exp offers a comprehensive selection of electronic probes to maximally extend its capabilities to meet a wide range of applications including abdomen, pediatric, OB/GYN, cardiovascular, musculoskeletal, etc. The advanced probe technologies also effectively enhance the image quality and confidence in reaching clinical diagnoses even in difficult patients.



μ -scan Off



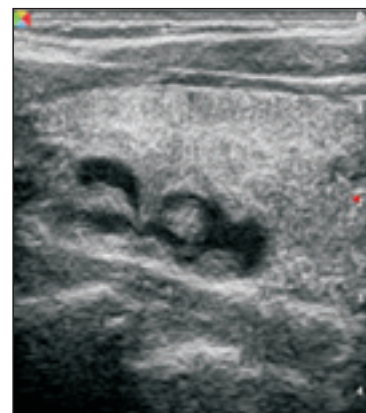
μ -scan On



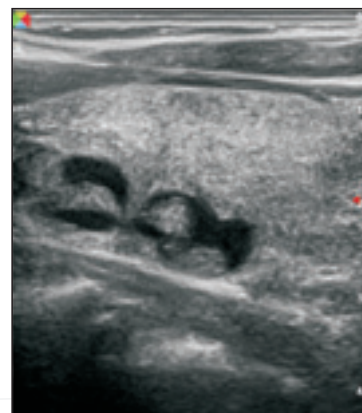
Pulse Inversion Harmonic Imaging Off



Pulse Inversion Harmonic Imaging On



Spatial Compound Imaging Off



Spatial Compound Imaging On

