

see thoroughly,  
insure safety

## RAD Series E+



RAD room

Performance  
Ergonomics  
Multipurpose



# RAD Series E+

RAD room



**see thoroughly, insure safety**



# PERFORMANCE PERFORMANCE

RAD Series E+ is a multipurpose RAD room: it allows all skeleton and chest examinations. Incidences can be performed on table, on chest stand, and on wheelchair patient. Design's materials and methods ensure reliable equipment for most demanding environments. RAD Series E+ is an hospital grade equipment with good value for money.

# RAD Series E+

RAD room

The four-way floating tabletop is made of low absorption material and stands up to 200 kg.

By pressing the footswitch, electromagnetic brakes are released. The longitudinal movement combined with the column travel allow examinations without moving the patient.



ERGGO  
ERGON

RAD Series E+ provides easy access and flexibility. The table height allows convenient positioning.



see thoroughly, insure safety



# ERGONOMICS

Unrestricted access ensures safe and easy patient's transfers.



# RAD Series E+

RAD room

The column's lock switches release the tube rotation, the longitudinal and vertical movements, either simultaneously or separately.

Thus, positioning can be done precisely.

Tube rotation, column and table movements enable examinations with angulations.



MULTIPLUR  
MULTIPUR



Lateral exposures can be performed by rotating the column and the tube.

see thoroughly, insure safety

The column can be free from table to perform lower limbs examinations.

The chest stand's bucky travels up to 190 cm from the floor.

The multipurpose RAD Series E+ allows taking x-rays from head to toes.

POSE  
POSE





# Technical specifications

## RAD Series E+

### Table

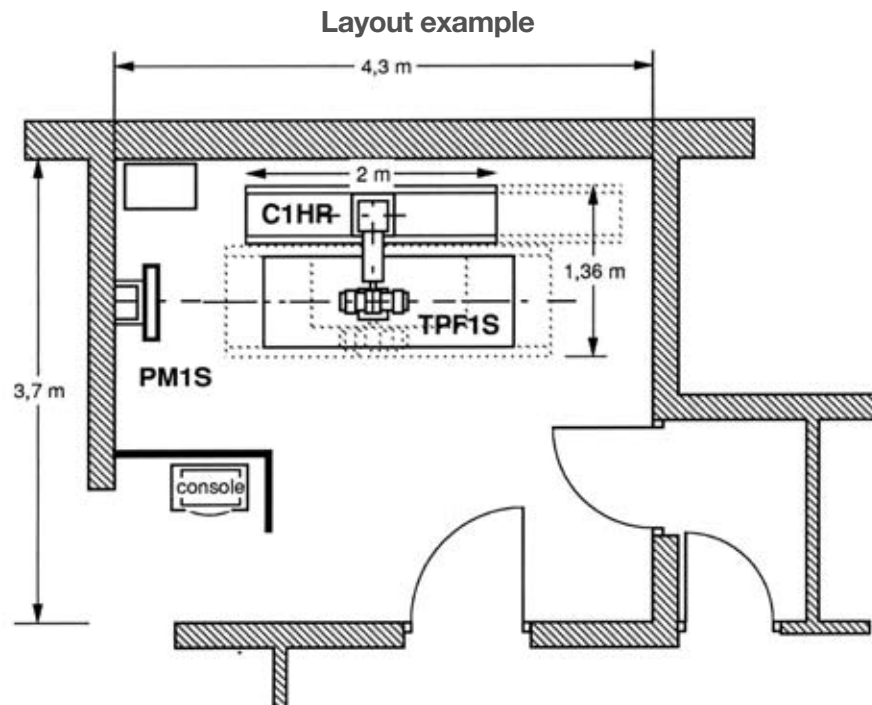
Height	77.4 cm
Longitudinal movement	60 cm
Lateral movement	17 cm
Bucky movement	43 cm
Grid	ratio 12 :1, 40 l/cm, F = 100 cm
Maximum patient weight	200 kg
Dimensions and weight	200 x 72.5 x 77.4 cm - 80 kg

### Tubestand

Longitudinal movement	148 cm with rails of 200 cm
Telescopic arm travel (option)	30 cm
X-ray tube's vertical axis/floor distance	from 40 cm to 190 cm
Tube's rotation	+/- 180°
Column's rotation	+/- 90°
Dimensions and weight	200 x 109 x 232 cm - 224 kg

### Chest stand

Height from bucky centre to floor	from 40 to 190 cm
Grid	ratio 12/1, F = 150 cm
Dimensions and weight	345 x 62.2 x 224 cm - 145 kg



#### Head Office

47-49, rue Eugène Beaune  
42005 Saint-Etienne cedex 01 - FRANCE  
Tel : + 33 4 77 47 81 60  
Fax : + 33 4 77 37 55 19

[www.stephanix.com](http://www.stephanix.com)

#### Export Department

15, rue du Saule Trapu  
91882 Massy cedex - FRANCE  
Tel : + 33 1 60 13 56 25  
Fax : + 33 1 60 13 56 30